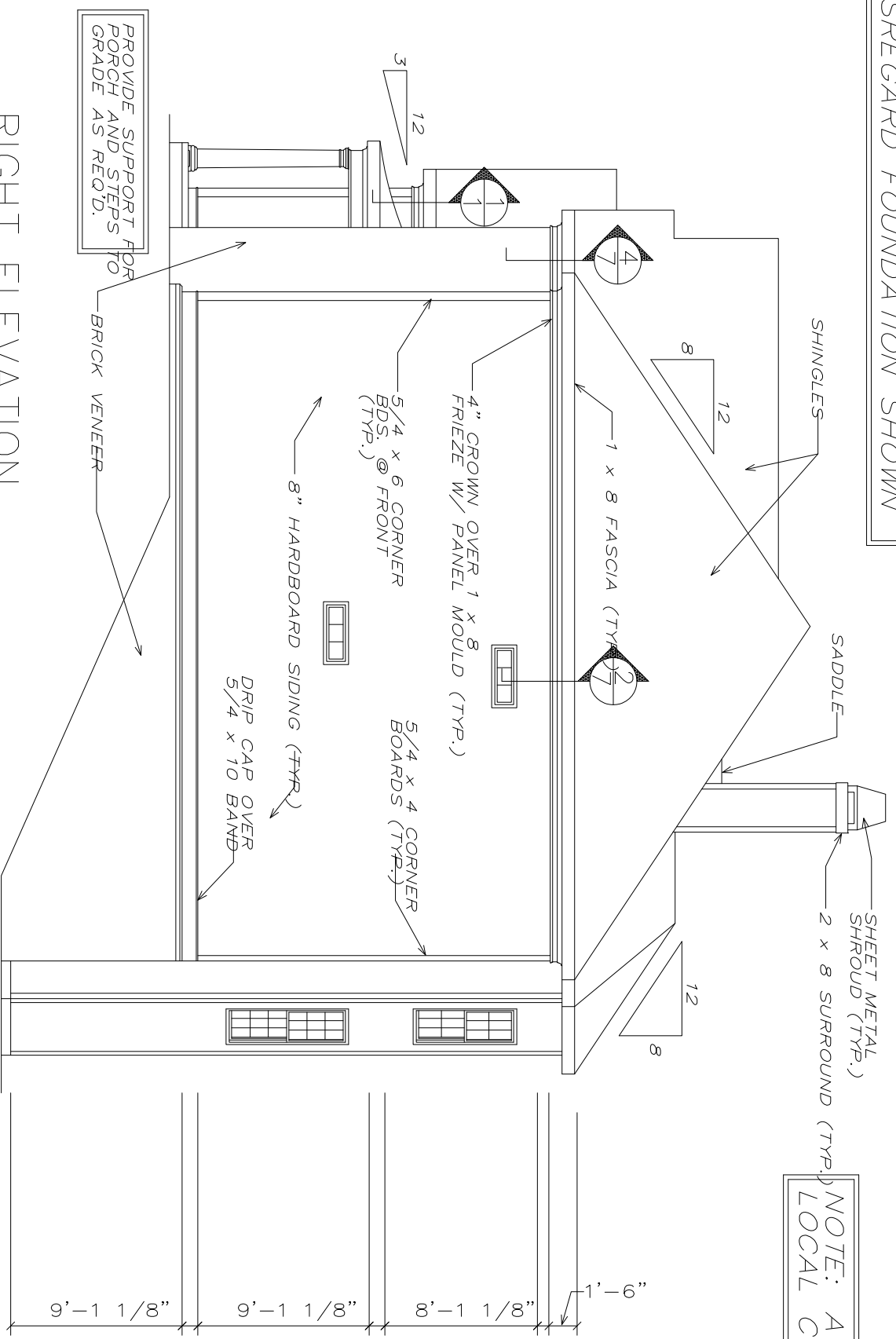


LEFT ELEVATION
1/8" = 1'-0"

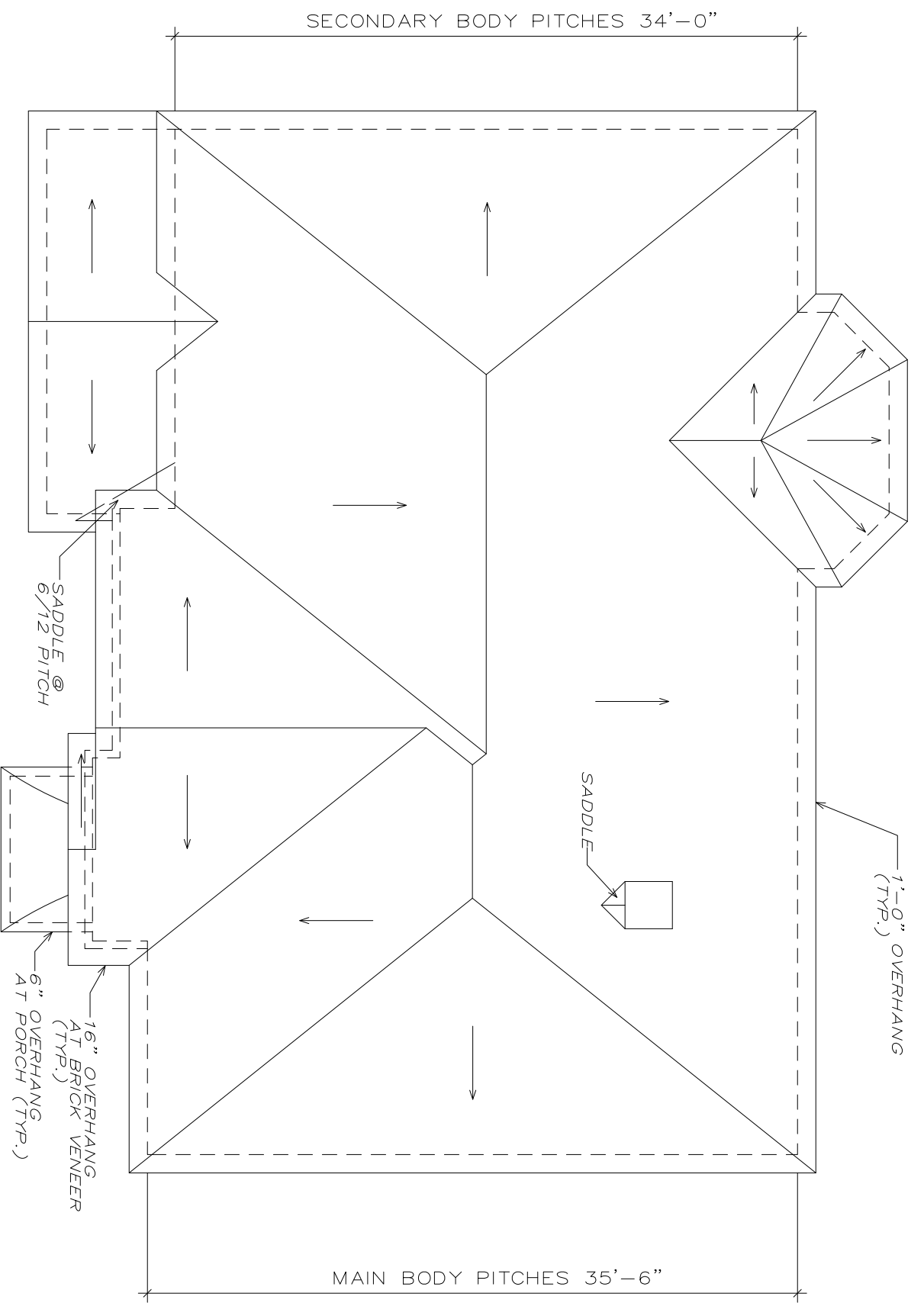
NOTE: ELEVATIONS REFLECT A BASEMENT FOUNDATION. IF ANOTHER FOUNDATION IS USED, BUILDER SHOULD DISREGARD FOUNDATION SHOW

NOTE: RAFTERS ARE PITCHED FROM TOP OF KNEEWALLS SEE DETAILS

NOTE: ATTIC VENTILATION PER LOCAL CODES AND REQUIREMENTS

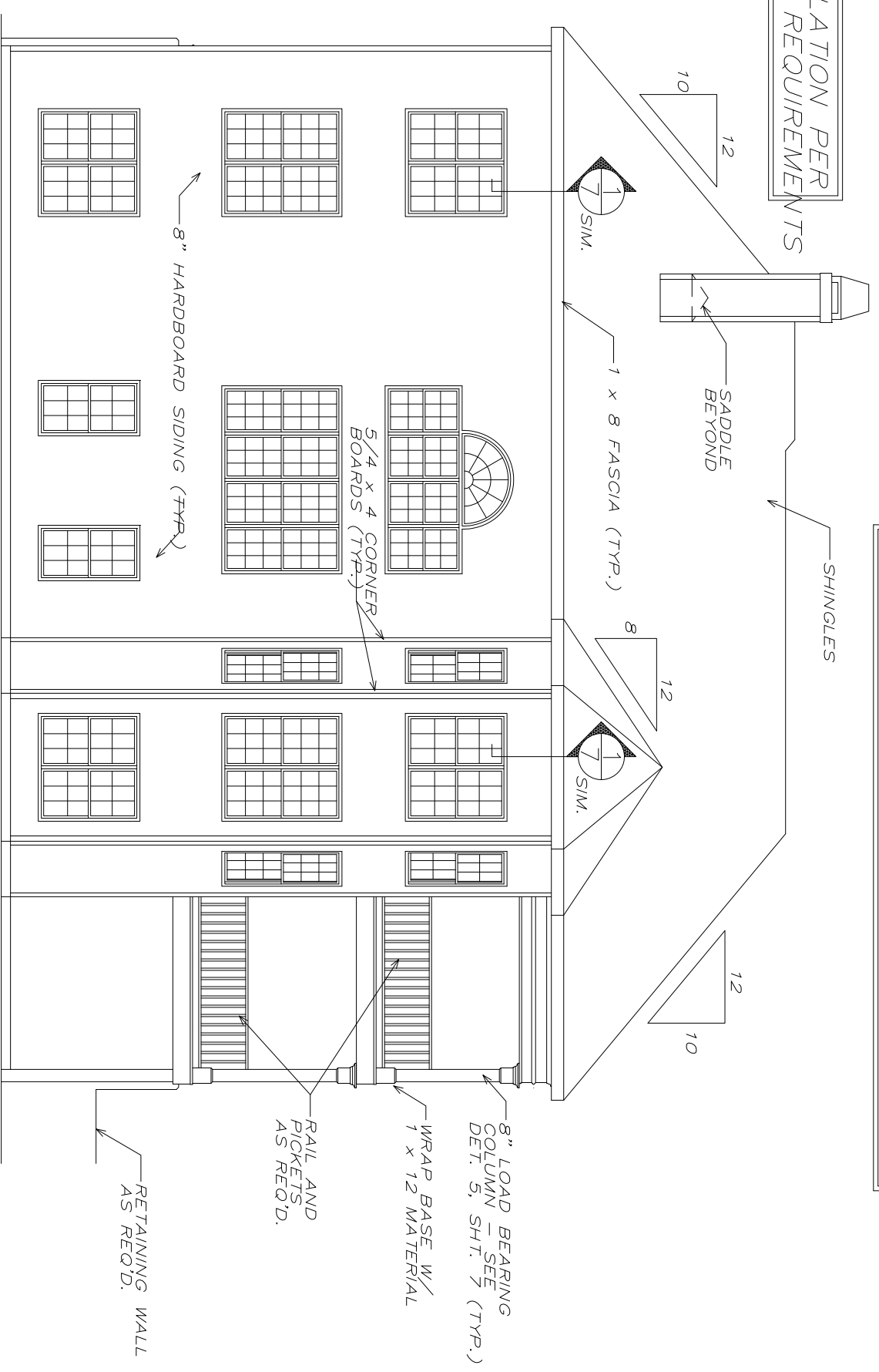


RIGHT ELEVATION
1/8" = 1'-0"



ROOF PLAN
1/8" = 1'-0"

NOTE: WHEN TWO ROOFS INTERSECT WITH DIFFERENT ROOF PITCHES, BLOCK TOP OF STUD WALLS AS REQ'D. TO LINE UP FASCIAS AT A MINIMUM OF 1'-0" OVERHANG



REAR ELEVATION
1/8" = 1'-0"

DATE	REV	DATE	REV

Copyright Frank Betz Associates, Inc. All Rights Reserved. The Duplication, Reproduction, Copying, Sale, Rental, Licensing, or any other distribution or use of these drawings, any portion thereof, or the plans depicted hereon is Strictly Prohibited unless expressly authorized in writing by FBA, Inc.



ELEVATIONS / ROOF PLAN
THE KEARNEY

FBA
FRANK BETZ ASSOCIATES, INC.
2401 LAKE PARK DRIVE/SUITE 250
SMYRNA, GEORGIA 30080
770/431-0888
www.frankbetz.com

BY
PLD & MWR

DATE
11/27/00

SHEET
2
OF 7

FRANK BETZ ASSOCIATES, INC. ASSUMES NO LIABILITY FOR ANY CHANGES OR MODIFICATIONS MADE TO THESE PLANS BY OTHERS.

COPYRIGHT © 2000 BY FRANK BETZ ASSOCIATES, INC. NOT TO BE REPRODUCED