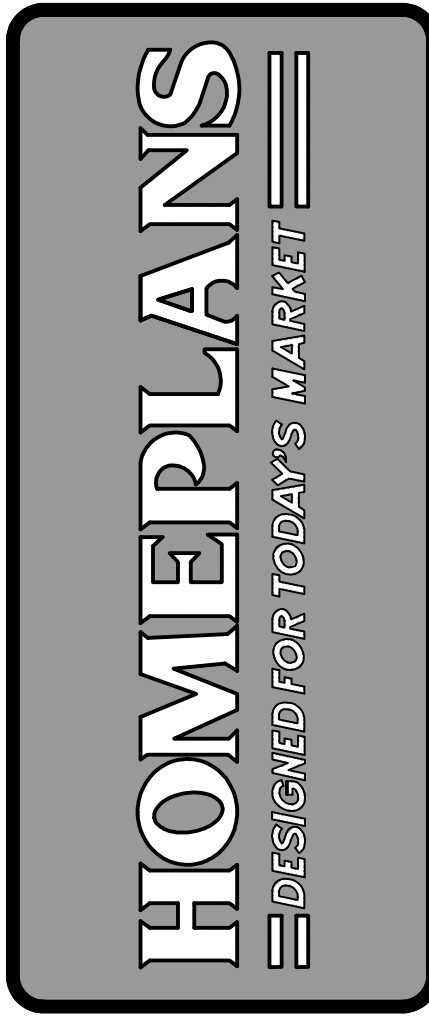


REVISIONS	DATE	BY

This drawing is not to be reproduced or used to contract any building without the written authorization of Frank Betz Associates, Inc.



SECOND FLOOR PLAN

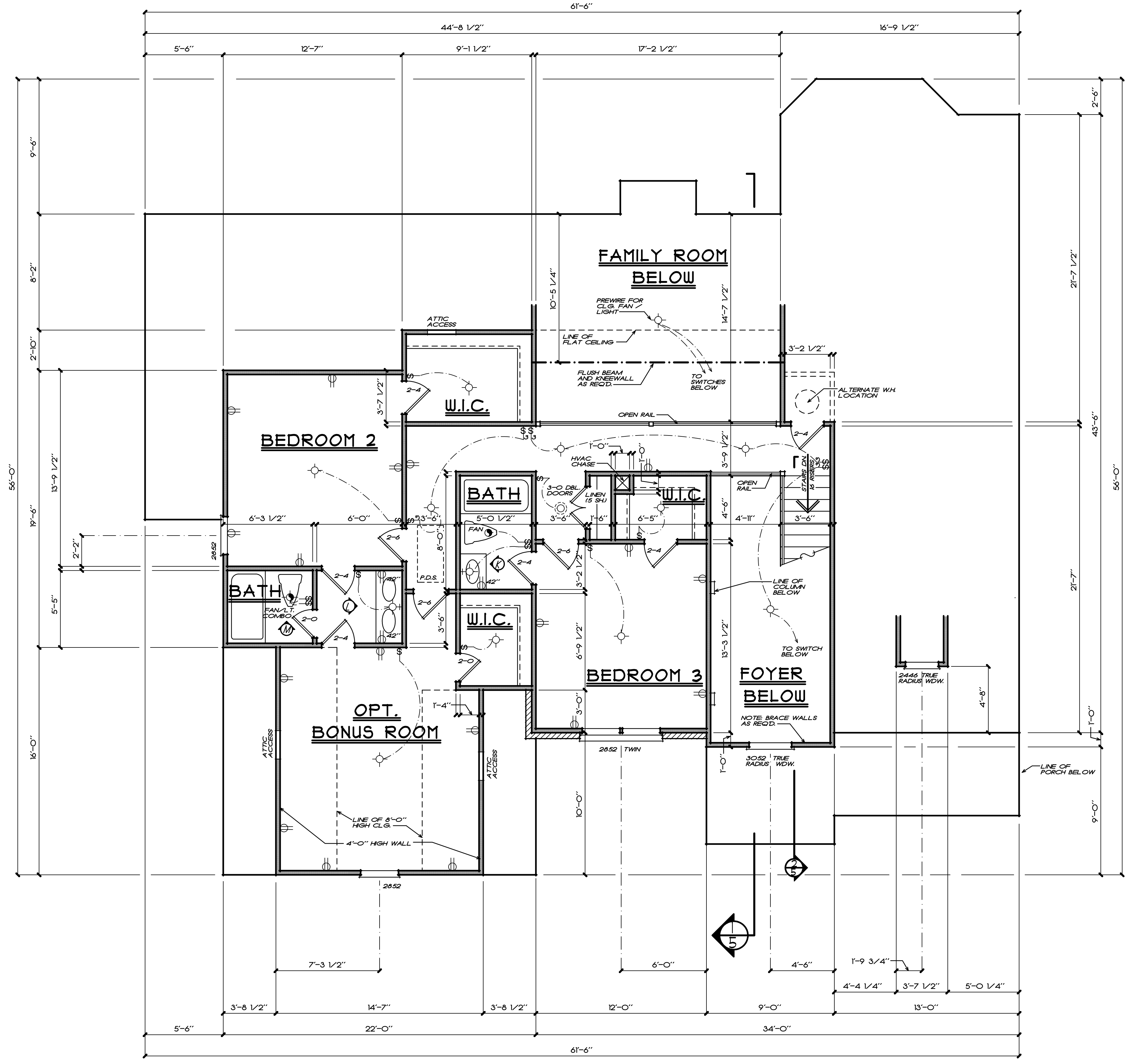
THE TENNYSON

**FBA**  
**FRANK BETZ ASSOCIATES, INC.**  
 2401 LAKE PARK DRIVE, SUITE 250  
 SMYRNA, GEORGIA 30080  
 770/431-0888

BY: DCO CK: JG

DATE: 5-13-97

SHEET:  
**4**  
 OF: 6



NOTE: ALL CEILING JOISTS AND RAFTER BRACING TO BEAR ON LOAD BEARING WALLS DESIGNED TO CARRY LOAD THRU ALL LEVELS AND TERMINATE AT FOUNDATION AND BE SUPPORTED BY THICKENED SLAB GRADE BEAM OR FOOTING DESIGNED TO CARRY LOAD.

**SECOND FLOOR PLAN**  
 1/4" = 1'-0"

FRANK BETZ ASSOCIATES, INC. ASSUMES NO LIABILITY FOR ANY CHANGES OR MODIFICATIONS MADE TO THESE PLANS BY OTHERS.

NOTE: ALL ANGLES ARE 45° UNLESS OTHERWISE NOTED